

PRODUCT MONOGRAPH

PrDIFFERIN®

adapalene topical cream

0.1% w/w

adapalene topical gel

0.1% w/w

adapalene topical lotion

0.1% w/w

PrDIFFERIN XP®

adapalene topical gel

0.3% w/w

Acne Therapy

GALDERMA CANADA INC.
55 Commerce Valley Dr. W.
4th Floor
Thornhill, Ontario L3T 7V9

Date of Initial Authorization:
January 13, 1995

Date of Revision:
September 28, 2021

Submission Control Number: 250710

RECENT MAJOR LABEL CHANGES

1 Indication, 1.1 Pediatrics (< 12 years of age)	09/2021
1 Indication, 1.2 Geriatrics (> 65 years of age)	09/2021
5 Overdosage	09/2021
7 Warnings and Precautions, Reproductive Health: Female and Male Potential	09/2021
7 Warnings and Precautions, 7.1.1 Pregnant Women	09/2021

TABLE OF CONTENTS

RECENT MAJOR LABEL CHANGES	2
TABLE OF CONTENTS	2
PART I: HEALTH PROFESSIONAL INFORMATION	4
1 INDICATIONS	4
1.1 Pediatrics (< 12 years of age)	4
1.2 Geriatrics (> 65 years of age).....	4
2 CONTRAINDICATIONS	4
4 DOSAGE AND ADMINISTRATION	4
4.2 Recommended Dose and Dosage Adjustment.....	4
4.5 Missed Dose	5
5 OVERDOSAGE	5
6 DOSAGE FORMS, STRENGTHS, COMPOSITION AND PACKAGING	6
7 WARNINGS AND PRECAUTIONS	7
7.1 Special Populations	8
7.1.1 Pregnant Women	8
7.1.2 Breast-feeding	8
7.1.3 Pediatrics (< 12 years of age)	8
7.1.4 Geriatrics (> 65 years of age).....	8
8 ADVERSE REACTIONS	8
8.1 Adverse Reaction Overview	8
8.2 Clinical Trial Adverse Reactions.....	9
8.2.1 Clinical Trial Adverse Reactions – Pediatrics (12 – 18 years)	11
8.3 Less Common Clinical Trial Adverse Reactions (<1%)	11
8.3.1 Less Common Clinical Trial Adverse Reactions – Pediatrics (12 – 18 years).....	12
8.5 Post-Market Adverse Reactions.....	12

9	DRUG INTERACTIONS	12
9.2	Drug Interactions Overview	12
9.4	Drug-Drug Interactions.....	12
9.6	Drug-Herb Interactions.....	13
9.7	Drug-Laboratory Test Interactions.....	13
10	CLINICAL PHARMACOLOGY.....	13
10.1	Mechanism of Action.....	13
10.2	Pharmacodynamics	13
10.3	Pharmacokinetics.....	14
11	STORAGE, STABILITY AND DISPOSAL.....	15
12	SPECIAL HANDLING INSTRUCTIONS.....	15
PART II: SCIENTIFIC INFORMATION		16
13	PHARMACEUTICAL INFORMATION.....	16
14	CLINICAL TRIALS.....	17
14.1	Efficacy and Safety Studies	17
14.2	Study Results.....	18
15	MICROBIOLOGY.....	20
16	NON-CLINICAL TOXICOLOGY.....	20
PATIENT MEDICATION INFORMATION		23

PART I: HEALTH PROFESSIONAL INFORMATION

1 INDICATIONS

DIFFERIN (adapalene) topical cream, gel and lotion, and DIFFERIN XP (adapalene) topical gel are indicated for:

- Treatment of *acne vulgaris* in patients 12 years of age and older.

1.1 Pediatrics (< 12 years of age)

Safety and effectiveness of DIFFERIN and DIFFERIN XP in children below the age of 12 have not been established; therefore, Health Canada has not authorized an indication in children under 12.

1.2 Geriatrics (> 65 years of age)

Safety and effectiveness of DIFFERIN and DIFFERIN XP in geriatric patients aged 65 years and above have not been established; therefore, Health Canada has not authorized an indication in adults over 65 years.

2 CONTRAINDICATIONS

- Patients who are hypersensitive to this drug or to any ingredient in the formulation or component of the container. For a complete listing, see **6 DOSAGE FORMS, STRENGTHS, COMPOSITION AND PACKAGING** section of the Product Monograph.
- Patients with eczema or seborrheic dermatitis.
- Pregnancy
- Women planning a pregnancy.

4 DOSAGE AND ADMINISTRATION

4.2 Recommended Dose and Dosage Adjustment

DIFFERIN (adapalene) topical cream, gel and lotion, or DIFFERIN XP (adapalene) topical gel should be applied to the affected areas of the face, chest and back once a day before retiring and after washing. A small amount should be applied to provide a thin film, avoiding eyes, lips and mucous membranes. Ensure that the affected areas are dry before application.

DIFFERIN products should not come into contact with the eyes, mouth, angles of the nose or mucous membranes. If product enters the eye, wash immediately with warm water. This medication should not be applied to cuts, abrasions, eczematous, or sunburned skin.

Discontinue treatment if a severe local inflammatory response is experienced. Reinstigate therapy when the reaction has subsided, initially applying the preparation less frequently. Once daily application may be resumed if it is judged that the patient is able to tolerate the treatment.

Clinical improvement is expected to be clearly evident after four to eight weeks of treatment, with further improvement expected with continued use. Cutaneous safety of DIFFERIN topical gel has been demonstrated over a six-month period of treatment. Cutaneous safety of DIFFERIN XP topical gel has been demonstrated over a 12-month period of treatment.

4.5 Missed Dose

Dosing should continue as per usual the following evening, and the usual amount should be applied.

5 OVERDOSAGE

DIFFERIN (adapalene) topical cream, gel and lotion, and DIFFERIN XP (adapalene) topical gel are intended for cutaneous use only. If the medication is applied excessively, no more rapid or better results will be obtained and marked redness, peeling or discomfort may occur.

Inadvertent oral ingestion of adapalene may lead to the same adverse effects as those associated with excessive oral intake of Vitamin A including teratogenesis in women of childbearing years. Therefore, in such cases, pregnancy testing should be carried out in women of childbearing years.

For management of a suspected drug overdose, contact your regional poison control centre.

6 DOSAGE FORMS, STRENGTHS, COMPOSITION AND PACKAGING

Table – Dosage Forms, Strengths, Composition and Packaging

Route of Administration	Dosage Form / Strength/Composition	Non-medicinal Ingredients
topical	cream 0.1% w/w (1 mg)	carbomer 934P, cyclomethicone, edetate disodium, glycerin, methyl gluceth-20 sesquistearate, methyl glucose sesquistearate, methylparaben, phenoxyethanol, propylparaben, squalane, trolamine, and purified water
	gel 0.1% w/w (1 mg)	carbomer 940, edetate disodium, methylparaben, poloxamer 182, propylene glycol, sodium hydroxide and/or hydrochloric acid for pH adjustment, and purified water
	lotion 0.1% w/w (1 mg)	carbomer 941, disodium edetate, medium chain triglycerides, methylparaben, phenoxyethanol, poloxamer 124, polyoxyl-6-polyoxyl-32 palmitostearate, PPG-12 / SMDI copolymer, propylene glycol, propylparaben, sodium hydroxide, stearyl alcohol, and purified water
	gel 0.3% w/w (3 mg)	carbomer homopolymer type C, edetate disodium, methylparaben, poloxamer 124, propylene glycol, sodium hydroxide and/or hydrochloric acid for pH adjustment, and purified water

DIFFERIN (adapalene) topical cream, 0.1% w/w is supplied in the following sizes:

60 g laminate tube

DIFFERIN (adapalene) topical gel, 0.1% w/w is supplied in the following sizes:

60 g laminate tube

DIFFERIN (adapalene) topical lotion, 0.1% w/w is supplied in the following sizes:

60 mL HDPE bottle with pump

120 mL HDPE bottle with pump

DIFFERIN XP (adapalene) topical gel, 0.3% w/w is supplied in the following sizes:

60 g laminate tube

7 WARNINGS AND PRECAUTIONS

General

For external use only. Avoid contact with the eyes, lips, angles of the nose, mucous membranes and open wounds. Certain cutaneous signs and symptoms such as erythema, dryness, scaling, burning or pruritus are associated with the topical application of retinoids and can also be expected with the use of DIFFERIN (adapalene) topical cream, gel or lotion, and with DIFFERIN XP (adapalene) topical gel. These treatment-related effects generally occur during the first two to four weeks of therapy and usually resolve as the skin undergoes adjustment with continued use. Depending on the degree of the side effects, patients can be directed to use a moisturizer, use the medication less frequently or temporarily discontinue use until the symptoms subside or to discontinue use altogether (see **4 DOSAGE AND ADMINISTRATION**).

As with any retinoid, exposure to excessive sunlight, including sunlamps, should be avoided while using the preparation, or a suitably effective sunscreen product and protective clothing over the treated areas is recommended when exposure cannot be avoided. Weather extremes, such as wind or cold, also may be irritating to patients under treatment with adapalene. As with other retinoids, use of "waxing" as a depilatory method should be avoided on skin treated with adapalene.

Avoid concomitant use of other potentially irritating topical products (abrasive soaps and cleansers, soaps and cosmetics that have strong skin-drying effect and products with high concentrations of alcohol, astringents, spices, or limes).

Patients should be advised to use non-comedogenic cosmetics. Colour cosmetics such as blushers and powders are acceptable, however, make-up cosmetics should be water based only. Cosmetics must be removed by thorough cleansing before the area is treated.

Carcinogenesis and Mutagenesis

See **16 NON-CLINICAL TOXICOLOGY**.

Reproductive Health: Female and Male Potential

- **Teratogenic Risk (class effect)**

Orally administered retinoids have been associated with congenital abnormalities. *Topical adapalene is contraindicated in pregnant women and women planning a pregnancy because of the possibility of an increased systemic exposure due to various factors (e.g. damaged skin barrier, excessive use) (see 2 CONTRAINDICATIONS).*

7.1 Special Populations

7.1.1 Pregnant Women

DIFFERIN and DIFFERIN XP are contraindicated in women who are or may become pregnant (see **2 CONTRAINDICATIONS**).

There have been rare reports of birth defects among babies born to women exposed to topical retinoids during pregnancy. However, there are no well controlled prospective studies of the use of topical retinoids, including adapalene, in pregnant women. A retrospective study of mothers exposed to topical tretinoin during the first trimester of pregnancy found no increase in the incidence of birth defects. If the patient becomes pregnant while using these drugs, treatment should be discontinued.

There are no adequate and well-controlled studies in pregnant women (see **16 NON-CLINICAL TOXICOLOGY**).

7.1.2 Breast-feeding

It is not known whether this drug is excreted in human milk. Animal pharmacology studies indicate that adapalene is excreted in milk at levels lower than plasma levels. Because many drugs are excreted in human milk, caution should be exercised when DIFFERIN topical cream, gel or lotion, or DIFFERIN XP topical gel is administered to a nursing mother. To avoid contact exposure of the infant, application of DIFFERIN and DIFFERIN XP to the chest should be avoided when used during breast-feeding.

7.1.3 Pediatrics (< 12 years of age)

No specific monitoring or hazards are associated with the use of the product in pediatric patients between the ages of 12 and 16 years. Safety and effectiveness in children below the age of 12 have not been established.

7.1.4 Geriatrics (> 65 years of age)

Safety and effectiveness in geriatric patients age 65 and above have not been established.

8 ADVERSE REACTIONS

8.1 Adverse Reaction Overview

Treatment-related adverse reactions typically associated with use of DIFFERIN and DIFFERIN XP include mild to moderate application site reactions, such as skin irritation characterized by scaling, dryness, erythema, burning and stinging. DIFFERIN XP results in a slightly greater incidence of these events, as would be expected with the higher concentration of adapalene.

These reactions usually occur early in the treatment and tend to resolve after 2 to 4 weeks of therapy (see **7 WARNINGS AND PRECAUTIONS**).

8.2 Clinical Trial Adverse Reactions

Clinical trials are conducted under very specific conditions. The adverse reaction rates observed in the clinical trials; therefore, may not reflect the rates observed in practice and should not be compared to the rates in the clinical trials of another drug. Adverse reaction information from clinical trials may be useful in identifying and approximating rates of drug reactions in real-world use.

DIFFERIN (adapalene) Topical Cream or Topical Gel

In clinical trials with DIFFERIN topical gel and cream 0.1%, most of the reactions occurred within two to four weeks of initiation of therapy and were generally observed to resolve with continued use of the product or temporary adjustment of the treatment schedule. Contact allergy to topical adapalene was not reported during clinical trials. To date, all adverse effects of DIFFERIN topical cream or gel 0.1% have been reversible upon discontinuation of therapy.

DIFFERIN Topical Lotion

During two multicentre, active- and vehicle-controlled, Phase III clinical trials, patients with acne vulgaris, 12 years and older, were treated with DIFFERIN Lotion or its vehicle once daily for 12 weeks. A total of 1068 patients were exposed to DIFFERIN Lotion in these trials. In general, most of the signs and symptoms of cutaneous irritation (erythema, scaling, dryness, and/or burning/stinging) were either mild or moderate in severity and occurred primarily during the first two weeks of treatment, and decreased thereafter. The majority of cases of local irritation were managed with moisturizers.

DIFFERIN XP (adapalene) Topical Gel:

In a multi-centre, placebo- and active-controlled Phase III clinical trial, signs and symptoms of local cutaneous irritation were monitored in 258 adult acne patients who used DIFFERIN XP topical gel 0.3% once daily for 12 weeks. Of the patients who experienced cutaneous irritation (erythema, scaling, dryness, and/or burning/stinging), the majority of cases were mild to moderate in severity, occurred in the first week of treatment, and decreased thereafter.

In a one-year, open-label safety study of 551 patients with acne vulgaris who used DIFFERIN XP, the pattern of adverse events was similar to the 12-week controlled study. The percentage of subjects who experienced cutaneous irritation (scaling, erythema, dryness, and/or stinging/burning) greater than baseline was highest after one week of treatment and decreased thereafter, continuing to decrease during the one-year treatment period.

Table 1: Related Adverse Drug Reactions^a from Open, and Vehicle- and Active-Controlled Studies

	DIFFERIN XP adapalene gel 0.3% n= 1087 (%)	DIFFERIN adapalene gel 0.1% n=1463 (%)	DIFFERIN adapalene cream 0.1% n=311 (%)	DIFFERIN adapalene lotion 0.1% n=1068 (%)	Gel Vehicle n=134 (%)	Lotion Vehicle n=1073 (%)
Total No. (%) of Subjects with Related ¹ Adverse Drug Reaction(s)	267 (24.6%)	153 (10.5%)	16 (5.1%)	109 (10.2%)	6 (4.5%)	49 (4.6%)
Skin and Appendages	263 (24.2%)	164 (11.2%)	17 (5.5%)	109 (10.2%)	6 (4.5%)	48 (4.5%)
Skin dry	117 (10.8%)	58 (4.0%)	1 (0.3%)	79 (7.4%)	2 (1.5%)	32 (3.0%)
Erythema	27 (2.5%)	18 (1.2%)	0 (0%)	2 (0.2%)	0 (0%)	0 (0.0%)
Skin discomfort	70 (6.4%)	40 (2.7%)	1 (0.3%)	5 (0.5%)	0 (0%)	0 (0.0%)
Desquamation	28 (2.6%)	9 (0.6%)	0 (0%)	0 (0.0%)	0 (0%)	0 (0.0%)
Pruritus	18 (1.7%)	13 (0.9%)	0 (0%)	5 (0.5%)	0 (0%)	5 (0.5%)
Sunburn	21 (1.9%)	13 (0.9%)	3 (1.0%)	2 (0.2%)	2 (1.5%)	1 (0.1%)
Irritant dermatitis	59 (5.4%)	33 (2.3%)	0 (0%)	0 (0.0%)	0 (0%)	0 (0.0%)
Skin irritation	0 (0%)	4 (0.4%)	5 (1.6%)	8 (0.7%)	0 (0%)	7 (0.7%)

¹ Related = Possibly, probably, or definitely related

^a Adverse drug reactions do not include known local adverse events (local tolerability) of retinoids

The proportion of subjects with adverse events was generally higher for the DIFFERIN XP group compared to the adapalene gel 0.1% group, as was expected with the higher concentration. Almost all related adverse events were in the Skin and Appendages body system and most were mild to moderate in severity.

In controlled clinical trials for DIFFERIN Gel or Cream, 0.1%, local cutaneous irritation in acne patients was monitored. Patients commonly experienced cutaneous irritation (erythema, scaling, dryness, pruritis, and/or burning/stinging); the majority of cases were mild to moderate in severity.

In a controlled clinical trial for DIFFERIN Gel, 0.3%, local cutaneous irritation in acne patients was monitored. Patients very commonly experienced cutaneous irritation (erythema, scaling, dryness, and/or burning/stinging), the majority of cases were mild to moderate in severity, occurred early in treatment and decreased thereafter.

In controlled clinical trials for DIFFERIN Lotion, 0.1%, the incidence of local cutaneous irritation in acne patients was monitored and the data is provided in the following table:

Table 2: Incidence of Local Cutaneous Irritation - Emergent Signs and Symptoms for Adapalene Lotion in RD.06.SPR.18113 and RD.06.SPR.18114 (Combined)

Combined Studies	Maximum Severity During Treatment (N=1057)			End of Treatment (12 Weeks) Severity (N=950)		
	Mild	Moderate	Severe	Mild	Moderate	Severe
Local Cutaneous Irritation (skin irritation)						
Erythema	21.8%	8.0%	0.2%	7.9%	2.6%	0.2%
Scaling	25.3%	6.5%	0.1%	5.3%	1.1%	0
Dryness	36.1%	7.3%	0.3%	7.6%	2.0%	0
Stinging/burning	22.1%	7.0%	0.9%	4.6%	1.0%	0.4%

8.2.1 Clinical Trial Adverse Reactions – Pediatrics (12 – 18 years)

Overall, the proportion of paediatric subjects (aged 12 to 18) with related AEs was generally higher for the DIFFERIN XP treatment group compared to the adapalene gel 0.1% groups.

In the SOC of skin and subcutaneous tissue disorders, the most experienced related AEs included cutaneous irritation of dry skin, skin irritation, erythema, skin discomfort and pruritus for all treatment groups.

For the SOC of skin, the related AEs were more common in the DIFFERIN XP treatment group compared to the adapalene gel 0.1% groups and included skin dry, discomfort skin, desquamation and sunburn. All other SOCs reported very few related AEs by preferred term.

8.3 Less Common Clinical Trial Adverse Reactions (<1%)

The following less common events have been designated as related (possibly, probably, definitely) to treatment with DIFFERIN AND DIFFERIN XP, considering all patients in the clinical trials in *acne vulgaris*:

Blood and Lymphatic System Disorders No significant abnormal values were observed in the short-term controlled studies or the long term safety study.

General Disorders and Administration Site Conditions: Pain, facial edema.

Skin and Subcutaneous Tissue Disorders: Eczema, contact dermatitis, atopic dermatitis, skin edema, dermatitis, acne, worsening of treated disease, urticaria, skin discoloration, seborrhea, herpes simplex, vesicular rash, eyelid edema, burning/stinging, pityriasis alba, erythematous rash, skin exfoliation.

Special Senses: Eye pain, keratoconjunctivitis.

8.3.1 Less Common Clinical Trial Adverse Reactions – Pediatrics (12 – 18 years)

Overall, the proportion of paediatric subjects (12 – 18 years) with less common (<1%) related AEs were mostly similar for the DIFFERIN XP and the adapalene gel 0.1% treatment groups. In the SOC of skin and subcutaneous tissue disorders, the related AEs occurring in <1% of paediatric subjects included cutaneous irritation of pruritus and skin burning sensation for all treatment groups. For the SOC of skin, the less common (<1%) related AEs included cutaneous irritation of skin dry, discomfort skin, desquamation and sunburn. All other SOCs reported very few less common (<1%) related AEs by preferred term.

8.5 Post-Market Adverse Reactions

Eye Disorders: eyelid irritation, eyelid erythema, eyelid pruritus, eyelid swelling.

Immune System Disorders: anaphylactic reaction, angioedema.

Skin and Subcutaneous Tissue Disorders: allergic dermatitis (allergic contact dermatitis), pain of skin, skin swelling, application site burn*, skin hypopigmentation, skin hyperpigmentation.

* Most of the cases of “application site burn” were superficial burns but cases with second degree burn reactions have been reported.

9 DRUG INTERACTIONS

9.2 Drug Interactions Overview

There are no known interactions with other medications which are likely to be used topically and concurrently with DIFFERIN (adapalene) topical cream, gel or lotion, or with DIFFERIN XP (adapalene) topical gel. Absorption of adapalene through human skin is low, and therefore interaction with systemic medications is unlikely.

9.4 Drug-Drug Interactions

As DIFFERIN and DIFFERIN XP have the potential for local irritation, it is possible that concomitant use of abrasive cleansers, strong drying agents, or irritant products may produce additive irritant effects. Particular caution should be exercised in using preparations containing sulfur, resorcinol, or salicylic acid in combination with DIFFERIN topical cream, gel or lotion, or with DIFFERIN XP. If these preparations have been used, it is advisable not to start therapy with DIFFERIN until the effects of such preparations have subsided.

Other cutaneous anti-acne treatments (e.g., erythromycin topical solution, clindamycin phosphate topical solution 1% or benzoyl peroxide products in concentrations up to 10%) may be used in the morning when DIFFERIN topical cream, gel or lotion, or DIFFERIN XP is used at night.

9.6 Drug-Herb Interactions

Interactions with herbal products have not been established.

9.7 Drug-Laboratory Test Interactions

Interactions with laboratory tests have not been established.

10 CLINICAL PHARMACOLOGY

10.1 Mechanism of Action

Adapalene is a chemically stable, retinoid-like compound. Biochemical and pharmacological profile studies have demonstrated that adapalene is a potent modulator of cellular differentiation, keratinization and inflammatory processes all of which represent important features in the pathology of *acne vulgaris*. Mechanistically, adapalene binds to specific retinoic acid nuclear receptors but, unlike tretinoin, does not bind to the cytosolic receptor protein. Although the exact mode of action of adapalene is unknown, current evidence suggests that topical adapalene normalizes the differentiation of follicular epithelial cells resulting in decreased microcomedone formation.

10.2 Pharmacodynamics

Studies in acne patients provide clinical evidence that topical adapalene is effective in reducing the noninflammatory acne lesions (open and closed comedones). Adapalene inhibits the chemotactic (directional) and chemokinetic (random) responses of human polymorphonuclear leucocytes in *in vitro* assay models; it also inhibits the metabolism of arachidonic acid, by lipoxidation, to inflammatory mediators. This profile suggests that the cell mediated inflammatory component of acne is modified by adapalene. Studies in human patients provide clinical evidence that topical adapalene is effective in reducing the inflammatory components of acne (i.e., papules and pustules).

10.3 Pharmacokinetics

Table 3: Summary of Adapalene's Pharmacokinetic Parameters in Adult Patients with Acne vulgaris Following Application of 0.3% Gel

	C_{max}	t₂ (h)	AUC₀₋₂₄	Clearance
Repeated dose mean	0.553 ± 0.466 ng/mL ^a	13 - 16 ^b	8.94 ± 8.99 ng.hr/mL ^c	Within 72 hours

^a Derived from 15/16 subjects

^b Derived from 7/16 subjects

^c Derived from 14/16 subjects

Absorption:

Absorption of adapalene through human skin is low. No quantifiable levels of parent substance have been found in the plasma of patients following chronic adapalene gel 0.1% application in controlled clinical trials (limit of quantification = 0.25 ng/mL). In adult patients with acne vulgaris who received daily applications of 0.3% gel for 10 days, the mean AUC(0-24h) on Day 10 was 8.94 ng.h/mL (SD: 8.99) and the mean C_{max} was 0.553 ng/mL (SD: 0.466). The C_{max} ranged from < 0.1 to 2 ng/mL and the maximum AUC(0-24h) value obtained was 36.1 ng.h/mL. The terminal apparent half-life ranged from 13 to 16 hours, thereby indicating that a pharmacokinetic steady-state was reached before Day 10.

Systemic exposure of adapalene following a topical application of adapalene lotion 0.1% was studied in one clinical study. Fourteen adult subjects with severe acne were treated with 2 g of adapalene lotion once daily for 30 days to approximately 1000 cm² of acne involved skin. Serial plasma samples were collected for 24 or 72 hours following application on days 1, 15 and 30. All plasma concentrations for 12 out of 14 patients were below the limit of quantification (LOQ=0.1 ng/mL). One patient had one sample above LOQ at day 30 and the other patient had four plasma samples above LOQ on both days 1 and 15, which ranged from 0.102 and 0.131 ng/mL. Due to the limited number of available data points, PK analysis was not undertaken.

Distribution:

Classical plasma protein binding techniques were not feasible for adapalene due to the physicochemical properties of the molecule. However, an alternative method was adopted which measures the partitioning of the drug between plasma or protein solutions and erythrocytes. When 3H-adapalene was incubated with human whole blood, 26% was bound to erythrocytes and total binding of adapalene in blood was > 99%. Adapalene bound primarily to lipoproteins and human serum albumin.

Metabolism:

Following 24-hour incubation with human hepatocytes, more than 90% of adapalene has been metabolized. Both metabolites and adapalene showed a possibility for conjugation - predominantly glucuronidation and sulfatation.

Elimination:

Excretion appears to be primarily by the biliary route. The majority of an administered dose of

0.3% gel was excreted by 144 hours post dose and no drug was detected after the 6th day following last application. Under maximized conditions, the mean total unchanged drug substance excreted in the faeces was $0.07\% \pm 0.06\%$ of the total dose applied (range, 0.02% to 0.19%).

11 STORAGE, STABILITY AND DISPOSAL

DIFFERIN (adapalene) topical cream, gel and lotion, and DIFFERIN XP (adapalene) topical gel should be stored at room temperature (15° to 30°C). Keep from freezing. Keep container tightly closed. Keep in a safe place out of the reach of children.

12 SPECIAL HANDLING INSTRUCTIONS

There are no special handling requirements for this product.

PART II: SCIENTIFIC INFORMATION

13 PHARMACEUTICAL INFORMATION

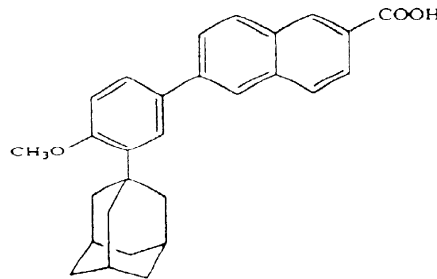
Drug Substance

Proper Name: adapalene

Chemical Name: 6-[3-(1-adamantyl)-4-methoxyphenyl]-2-naphthoic acid

Molecular Formula and Molecular Mass: $C_{28}H_{28}O_3$; 412.52

Structural Formula:



Physicochemical properties: Adapalene is a white to off-white powder, which is sparingly soluble in tetrahydrofuran and practically insoluble in water and ethanol (96%).

14 CLINICAL TRIALS

14.1 Efficacy and Safety Studies

Table 4: Summary of patient demographics for North American Phase III active- and vehicle-controlled clinical trial in acne vulgaris

Study #	Trial design	Dosage , route of administration, and duration	Study subjects (n=number)	Mean age (Range) Years	Gender % M/F
RD.06.SRE.18081	Double-blind, parallel, controlled (active & vehicle)	0.3% adapalene gel 0.1% adapalene gel gel vehicle Topical 12 weeks	(653) 258 261 134	18.2 (12 - 52)	49.5/50.5
RD.06.SPR.18113 and RD.06.SPR.18114	Double-blind, parallel, controlled (active & vehicle)	0.1% adapalene lotion lotion vehicle Topical 12 weeks	1068 1073	19.3 (12 - 54) 19.0 (12 - 64)	45.4/54.6 47.6/52.4
9111-CD271C-EV	Parallel, Randomized, Double-blind, Controlled (active & vehicle)	0.1% adapalene cream cream vehicle Topical 12 weeks	(350) 175 175	19 (12 - 31)	59/41

Male and female subjects, 12 years of age or older, were eligible to enroll in these controlled clinical trials. In study RD.06.SRE.18081, subjects with *acne vulgaris* with 20 to 50 inflammatory and 20 to 100 non-inflammatory lesions and no nodules or cysts were eligible to enroll in this study. In study RD.06.SPR.18113 and study RD.06.SPR.18114 with adapalene lotion 0.1%, patients with 20 to 50 inflammatory lesions on the face and 30 to 100 non-inflammatory lesions on the face, with no cysts and no more than one nodule on the face were eligible for enrollment. Subjects in study RD.06.SPR.18113 and study RD.06.SPR.18114 also had an Investigator's Global Assessment score of 3 (moderate) or 4 (severe) at Baseline.

Table 5: Summary of patient demographics for European Phase III active-controlled clinical trial in *acne vulgaris*

Study #	Trial design	Dosage, route of administration, and duration	Study subjects (n=number)	Mean age (Range) Years	Gender % M/F
RD.03.SRE.2673	Double-blind, parallel, active-controlled	0.3% adapalene gel 0.1% adapalene gel Topical 12 weeks	(418) 208 210	19.1 (12 – 39)	40.0/60.0

Male and female subjects, 12 years of age or older, were eligible to enroll in this controlled clinical trial. In study RD.03.SRE.2673, subjects with *acne vulgaris* with 15 to 50 inflammatory and 30 to 200 non-inflammatory lesions and a maximum of two nodules / cysts were eligible to enroll in this study.

14.2 Study Results

Table 6: Results of North American Study RD.06.SRE.18081 in *acne vulgaris* at Week 12 (Observed)

Primary Endpoints *	Adapalene Gel, 0.3% (n=227)	Adapalene Gel, 0.1% (n=237)	Gel Vehicle (placebo) (n=120)
Success rate [% of subjects with "Clear" or "Almost Clear" on Investigator's Global Assessment (IGA)]	23.3% [p value vs 0.1%: 0.072] [p value vs vehicle: 0.002]	16.97%	10.0%
Median % lesion count reduction			
Total	-55.60 [p value vs 0.1%: 0.003] [p value vs vehicle: <0.001]	-48.25	-36.40
Inflammatory	-62.50 [p value vs 0.1%: 0.099] [p value vs vehicle: <0.001]	-57.80	-47.25
Non-inflammatory	-52.10 [p value vs 0.1%: 0.003] [p value vs vehicle: <0.001]	-43.45	-29.35

*CMH analysis

Table 7: Results of North American Studies RD.06.SPR.18113 and RD.06.SPR.18114 (combined) in *acne vulgaris* at Week 12 (LOCF, ITT)

Primary Endpoints	Adapalene Lotion 0.1% (n=1068)	Lotion Vehicle (n=1073)	p-value
Success Rate [% of patients with a Week 12 Investigator's Global Assessment (IGA) at least 2 grades lower than Baseline]	25.2%	16.9%	p<0.001 ^a
Mean absolute (percent) reduction from Baseline in lesion counts:			
Inflammatory	13.7 (-50.5%)	10.4 (-38.6%)	p<0.001 ^b
Non-inflammatory	21.4 (-46.4%)	14.6 (-33.0%)	p<0.001 ^b
Total	35.2 (-48.0%)	25.0 (-35.0%)	p<0.001 ^b

^a Cochran-Mantel-Haenszel test, stratified by analysis centre

^b ANCOVA (ranked and unranked)

Table 8: Results of European Study RD.03.SRE.2673 in *acne vulgaris* at Week 12 (Observed)

Primary Endpoints	Adapalene Gel, 0.3% (ITT n=208)	Adapalene Gel, 0.1% (ITT n=210)
Median % lesion count reduction		
Total	-67.1% [p value vs 0.1%: 0.134]	-61.4%
Inflammatory	-65.4% [p value vs 0.1%: 0.310]	-64.0%
Non-inflammatory	-68.8% [p value vs 0.1%: 0.145]	-60.0%

Table 9: Results of North American Study 9111-CD271C-EV in *acne vulgaris* at Week 12 (Observed)

Primary Endpoints	Adapalene Cream, 0.1% (n=162)	Vehicle Cream (n=167)
Mean % lesion count reduction		
Total	-32% [p value vs vehicle: 0.0001]	-15%
Inflammatory	-15% [p value vs vehicle: 0.2396]	-5%
Non-inflammatory	-37% [p value vs 0.05%: 0.0001]	-15%

15 MICROBIOLOGY

Not applicable.

16 NON-CLINICAL TOXICOLOGY

General Toxicology:

The acute oral LD₅₀ of adapalene in Sprague-Dawley rats and in Charles River CD1 mice was found to be greater than 5000 mg/kg. The acute LD₅₀ of adapalene 0.3% gel or solution was found to be greater than 6 mg/kg in Sprague-Dawley rats (topical) and greater than 30 mg/kg in Iffa Credo OF1 mice (oral), respectively. No pharmacotoxic effects were observed in these studies.

The acute oral toxicity of adapalene topical gel, 0.1% in mice and rats is greater than 10 mL/kg (10 mg/kg).

Systemic administration of adapalene produced a hypervitaminosis A syndrome in mice, rats and dogs. In rats, it was present after four weeks at 5 mg/kg with adapalene given orally by dietary administration. The main target organ appears to be the bone.

Slight decreases in red blood cell parameters were observed in all species where adapalene was given orally. These slight changes were also observed in some topical studies in rats and rabbits, and occurred mainly with adapalene at 0.3% solution or aqueous gel. No morphological or histopathological changes were observed in bone marrow in several oral studies in rats and topical studies in rats and rabbits for periods up to six months. It is concluded that these changes were peripheral rather than central. The dose producing these minimal changes corresponds to 17 times the MRHD of adapalene 0.3% gel based on mg/m² comparisons for rats and 32 times the MRHD for rabbits.

Changes in clinical chemistry parameters (mostly decreases in protein and albumin concentrations, and increases in triglyceride concentration and liver-specific alkaline phosphatase activity) were observed in animals when adapalene was administered dermally (rats) or orally (rats and dogs). The effects were dose related, but reversible in recovery studies.

Given topically in solution (rabbits) or in aqueous gel (rabbits and mice), adapalene gave slight to moderate irritation according to the concentration and the duration and frequency of treatment.

Following 26 weeks of daily cutaneous application to rats at concentrations of up to 0.3% (6 mg/kg/day), adapalene gel was well tolerated. The dose related changes observed included erythema, flaking, and acanthosis at the application site, all of which were reversible over the course of an 8-week recovery period.

Adapalene lotion 0.1%, at doses up to 1.2 mg/kg/day, was applied to the skin of minipigs in a 3-month dermal toxicity study with toxicokinetic analysis. Most of the treatment-related effects were of a local dermal nature including very slight erythema with very slight or slight edema to minimal eschar formation. These mild signs of skin irritation essentially disappeared by the end of the one month recovery period. There were no signs of systemic toxicity. No significant plasma levels of drug were observed on day 1, and after 91 days of repeated application, plasma levels were noted in some of the animals in the 0.2 mg/kg/day group and in most of the animals in the 0.6 and 1.2 mg/kg/day groups, although levels were very variable. Plasma steady-state levels were probably not reached in all animals by day 91. The NOAEL for this study was considered to be the high dose of 1.2 mg/kg/day.

Carcinogenicity:

Lifetime studies with adapalene have been completed in mice at topical doses of 0.6 (0.03%), 2 (0.1%) and 6 (0.3%) mg/kg/day and in rats at oral doses of 0.15, 0.5 and 1.5 mg/kg/day and demonstrated no carcinogenic effect. However, a high incidence of splenic extra-medullary haematopoiesis was observed in male mice treated with 6 mg/kg/day (0.3%) topically applied adapalene gel. Oral administration of adapalene to Sprague-Dawley rats at a dose of 1.5 mg/kg/day for two years resulted in a higher incidence in males, relative to controls, of benign phaeochromocytoma of the adrenal medulla. These neoplastic changes are considered to have no relevance to the topical use of adapalene in humans in clinical conditions.

Animal studies have shown an increased tumorigenic risk with the use of related drugs (e.g., tretinoin) when combined with exposure to the ultraviolet (UV) light in sunlight, or from other UV sources. Studies to determine whether adapalene may accelerate the tumorigenic effects of UV radiation have not been conducted.

Genotoxicity:

In a series of *in vivo* and *in vitro* tests, adapalene did not demonstrate any mutagenic or genotoxic activity.

Reproductive and Developmental Toxicology:

Adapalene administered orally at doses of ≥ 25 mg/kg/day can induce major structural changes including cleft palate, cranial abnormalities and spina bifida in rat and rabbit foetuses. Similar teratogenic effects have also been reported with other retinoids.

Adapalene administered orally at doses of ≥ 25 mg/kg/day (38 times the Maximum Recommended Human Dose [MRHD] based on mg/m² comparisons for rats or 65 times MRHD for rabbits) has been shown to be teratogenic. No teratogenic effects were seen in rats at oral doses of up to 5.0 mg/kg/day adapalene (7.6 times the MRHD). Cutaneous teratology studies in rats and rabbits at doses of 0.6 (0.03 %), 2.0 (0.1 %) and 6.0 (0.3 %) mg/kg/day (17 times the MRHD for rats or 32 times the MRHD for rabbits) exhibited no teratogenicity. At 2 mg/kg/day (0.1% adapalene gel), no adverse events were observed in rabbits and only a marginal increase in the incidence of additional lumbar ribs was observed in rats. However, at 6 mg/kg/day (0.3% adapalene gel), in addition to the recorded increase in foetal rib numbers in the rat and rabbit, there were also other skeletal anomalies in both species.

In the topical studies at the clinical concentration of 0.3% (equivalent to 6 mg/kg/day of applied adapalene, and corresponding to 17 times the MRHD for rats or 32 times the MRHD for rabbits), increases in additional foetal rib numbers were recorded in both rats and rabbits. In the rat, there were also other minimal increases in skeletal anomalies such as small additional fissure in the parietal bone and asymmetric pelvis. In the rabbit, the skeletal anomalies were small additional fissures in the inter-parietal bone, 27 pre-sacral vertebrae, incomplete ossification of the head of limb long bones, and tail anomalies.

In the topical studies at the clinical concentration of 0.1% (equivalent to 2 mg/kg/day of applied adapalene), no adverse effects were observed in rabbits and only a marginal increase in the incidence of rudimentary additional lumbar ribs in rats was observed. The doses used in the topical teratology studies correspond to about 51 and 96 times the MRHD of adapalene 0.1% in the rat and rabbit respectively.

No effects of adapalene (doses up to 20 mg/kg/day) were found in rats on the reproductive performance or fertility of the F₀ males or females. Total litter loss was suffered by 3 out of 25 F₀ female rats (12%) orally dosed at 15 mg/kg/day; these females had pale and inactive mammary tissues. There were no detectable effects on the growth, development and subsequent reproductive function of the F₁ offspring.

READ THIS FOR SAFE AND EFFECTIVE USE OF YOUR MEDICINE

PATIENT MEDICATION INFORMATION

PrDIFFERIN®

adapalene topical cream

0.1% w/w

adapalene topical gel

0.1% w/w

adapalene topical lotion

0.1% w/w

PrDIFFERIN XP®

adapalene topical gel

0.3% w/w

Read this carefully before you start using **DIFFERIN** and **DIFFERIN XP** and each time you get a refill. This leaflet is a summary and will not tell you everything about this drug. Talk to your healthcare professional about your medical condition and treatment and ask if there is any new information about **DIFFERIN** and **DIFFERIN XP**.

What are DIFFERIN and DIFFERIN XP used for?

- treating acne in patients 12 years of age and older.

How do DIFFERIN and DIFFERIN XP work?

DIFFERIN and DIFFERIN XP are believed to work by modifying the action of skin cells to produce fewer pimples.

What are the ingredients in DIFFERIN and DIFFERIN XP?

Medicinal ingredients: adapalene

Non-medicinal ingredients:

DIFFERIN 0.1% w/w Cream: carbomer 934P, cyclomethicone, edetate disodium, glycerin, methyl gluceth-20 sesquistearate, methyl glucose sesquistearate, methylparaben, phenoxyethanol, propylparaben, squalane, trolamine, and purified water.

DIFFERIN 0.1% w/w Gel: carbomer 940, edetate disodium, methylparaben, poloxamer 182, propylene glycol, sodium hydroxide and/or hydrochloric acid for pH adjustment, and purified water.

DIFFERIN 0.1% w/w Lotion: carbomer 941, disodium edetate, medium chain triglycerides, methylparaben, phenoxyethanol, poloxamer 124, polyoxyl-6-polyoxyl-32 palmitostearate, PPG-12 / SMDI copolymer, propylene glycol, propylparaben, sodium hydroxide, stearyl alcohol, and purified water.

DIFFERIN XP 0.3% w/w Gel: carbomer homopolymer Type C, edetate disodium, methylparaben, poloxamer 124, propylene glycol, sodium hydroxide and/or hydrochloric acid for pH adjustment, and purified water.

DIFFERIN comes in the following dosage forms:

cream, 60 g tube

gel, 60 g tube

lotion, 60 mL and 120 mL bottle with pump*

**DIFFERIN Lotion not currently marketed in Canada.*

DIFFERIN XP comes in the following dosage form:

gel, 60 g tube

Do not use DIFFERIN and DIFFERIN XP if:

- you are pregnant or planning a pregnancy.
- you are allergic to this drug or to any ingredient in the formulation, including any non-medicinal ingredient, or component of the container (see **What are the ingredients in DIFFERIN and DIFFERIN XP?**). Check with your doctor if you know you are allergic to certain ingredients or package components to ensure that you can use DIFFERIN or DIFFERIN XP.
- you have eczema or very irritated skin (such as seborrheic dermatitis).

To help avoid side effects and ensure proper use, talk to your healthcare professional before you use DIFFERIN and DIFFERIN XP. Talk about any health conditions or problems you may have, including if you:

- **are pregnant or planning a pregnancy. You should discontinue use of DIFFERIN or DIFFERIN XP.**
- **are a female of childbearing years. You should use DIFFERIN or DIFFERIN XP only after consulting your doctor about contraceptive counselling.**
- are breast-feeding or intending to breast feed. It is not known if this drug is passed into breast milk. To avoid contact exposure of the infant, do not apply DIFFERIN or DIFFERIN XP to the chest when used during breast-feeding.
- are using any other acne medications. DIFFERIN and DIFFERIN XP should not be used

with other acne medications unless your doctor recommends them.

- are using any other prescription or OTC (over the counter) drugs or herbal remedies.

Other warnings you should know about:

Using DIFFERIN or DIFFERIN XP can make it more likely for you to get a sunburn. Do not expose yourself too much to sunlight, including sunlamps while using DIFFERIN or DIFFERIN XP. If you must be out in the sun, use a good sunscreen product (SPF 15 or higher) designed not to clog pores (non-comedogenic). You should also wear protective clothing over the treated areas.

Extreme cold or windy weather can irritate your skin while you are using DIFFERIN or DIFFERIN XP.

In the areas where you have applied DIFFERIN or DIFFERIN XP, do not remove unwanted hair by waxing. Waxing may cause your skin to become more sensitive.

Avoid using oily makeup or creams. Also avoid using products that make your skin dry, peel, or cause irritation. These can include abrasive soaps or cleansers, astringents, alcohol or products containing spices or limes. These may make your acne worse. You should only use water-based make-up while you are using DIFFERIN or DIFFERIN XP. Be sure to properly cleanse your skin and remove all makeup before you use DIFFERIN or DIFFERIN XP.

DIFFERIN and DIFFERIN XP are for external use only. Avoid using DIFFERIN or DIFFERIN XP around your eyes, lips, nose, and mucous membranes. You should also avoid using DIFFERIN or DIFFERIN XP on open wounds.

While you are using DIFFERIN or DIFFERIN XP, you may experience the following side effects:

- redness
- dryness
- scaling
- burning
- itchy skin

These side effects usually occur during the first two to four weeks of treatment. These side effects usually go away on their own as your skin adjusts to DIFFERIN or DIFFERIN XP. Depending on how severe your side effects are, your healthcare professional may recommend the following:

- Use a moisturizer with DIFFERIN or DIFFERIN XP.
- Use DIFFERIN or DIFFERIN XP less often.
- Stop using DIFFERIN or DIFFERIN XP until side effects get better.

DIFFERIN and DIFFERIN XP may cause local irritation. Using it with abrasive cleansers, strong drying agents, or irritant products at the same time may make your skin more irritated.

Tell your healthcare professional about all the medicines you take, including any drugs, vitamins, minerals, natural supplements or alternative medicines.

The following may interact with DIFFERIN and DIFFERIN XP:

- sulfur
- recorcinol
- salicylic acid

You should be extra careful when using products containing any of the ingredients listed above with DIFFERIN or DIFFERIN XP. If you have used these products, you should wait until their effects has lessened. Then you can start treatment with DIFFERIN or DIFFERIN XP.

If you are using DIFFERIN or DIFFERIN XP at night, you may use other anti-acne topical treatments in the morning. These can include:

- erythromycin topical solution, topical anti-acne treatments
- clindamycin phosphate topical solution 1%, topical anti-acne treatments
- benzoyl peroxide, topical anti-acne treatments

Check first with your healthcare professional before you start using any other treatments while you are using DIFFERIN or DIFFERIN XP.

How to use DIFFERIN and DIFFERIN XP:

Use only the amount your doctor recommends. Using more DIFFERIN or DIFFERIN XP will not make it work better or faster.

If you experience any severe side effects where you have applied DIFFERIN or DIFFERIN XP, stop treatment. Once your side effects have resolved, you can start using DIFFERIN or DIFFERIN XP again. Start by using DIFFERIN or DIFFERIN XP less often. As your skin adjusts to the treatment, you can use DIFFERIN or DIFFERIN XP more often until your skin can tolerate daily use.

Usual dose:

Use DIFFERIN or DIFFERIN XP once a day at night before you go to bed. You should first wash your face with a gentle cleanser and blot it dry with a soft towel -- do not rub your face. Then, apply a thin film of DIFFERIN or DIFFERIN XP to the areas where you have acne. Usually, four pea-sized amounts of DIFFERIN cream or gel, or DIFFERIN XP should be enough to cover your entire face. For DIFFERIN lotion, dispense a nickel size amount (3 - 4 actuations of the pump) to cover your entire face. DO NOT SPOT APPLY - cover the entire affected area.

Keep DIFFERIN or DIFFERIN XP away from your eyes, lips, the corners of your nose and mucous membranes. If you get any in your eyes, flush your eyes with clean warm water right

away. This medication should not be applied to cuts, abrasions, eczematous (skin with a red, itchy rash) or sunburned skin.

Your acne should improve in 4-8 weeks. You should see more improvement as you continue to use DIFFERIN or DIFFERIN XP.

Overdose:

DIFFERIN or DIFFERIN XP is meant to be applied in a thin film only on the areas of your skin where you have acne. If too much medication is applied, you will not get faster or better results. Instead, you may see a lot of redness or peeling, and your skin may feel hot or burning.

A 60 gram tube of DIFFERIN or DIFFERIN XP contains a total of 180 mg of adapalene. Even if someone eats the contents of a full tube of DIFFERIN or DIFFERIN XP, there is not enough active ingredient to cause serious harm. However, you should still contact your poison control centre. If you are a woman of childbearing age, have a pregnancy test done.

If you think you, or a person you are caring for, have been taken DIFFERIN or DIFFERIN XP, contact a health care practitioner, hospital emergency department or regional poison control centre immediately, even if there are no symptoms.

Missed Dose:

If you miss a dose, it is not necessary to make up the missed dose. Just wait until the next evening and use DIFFERIN or DIFFERIN XP as usual. Apply the same amount as you usually would. Do not apply extra.

What are possible side effects from using DIFFERIN and DIFFERIN XP?

These are not all the possible side effects you may have when using DIFFERIN or DIFFERIN XP. If you experience any side effects not listed here, tell your healthcare professional.

Do not be discouraged if DIFFERIN or DIFFERIN XP causes some redness, skin burning or tingling sensation or peeling when you first start to use it (2-4 weeks). This happens when your skin is adjusting to DIFFERIN or DIFFERIN XP's action of unplugging clogged pores. If these problems continue to happen or if they are getting worse, talk to your doctor. He/she may suggest that you use a moisturizer, or he/she may recommend a change in your dose, or in how often you use the medication. DIFFERIN or DIFFERIN XP may also cause the following side effects:

- skin irritation
- scaling
- dry skin
- skin discomfort
- skin pain or skin swelling
- application site burn
- darkening or lightening of skin colour
- itching
- acne
- dermatitis contact (allergic reaction)
- may make you more likely to sunburn

If DIFFERIN or DIFFERIN XP gets in your eye, rinse it right away with lots of water. Contact with your eye may cause swelling, conjunctivitis (pink eye) and eye irritation. If the irritation persists, talk to your doctor. DIFFERIN or DIFFERIN XP may cause eyelid irritation, itching, redness or swelling.

Serious side effects and what to do about them			
Symptom / effect	Talk to your healthcare professional		Stop taking drug and get immediate medical help
	Only if severe	In all cases	
UNCOMMON			
Skin disorders (dry skin, red skin, swollen, burned or blistered skin)	✓		
Allergic reactions (rash, itching, hive, swelling of face, lips or throat)			✓
Anaphylactic reactions (include generalised skin eruptions or skin reactions associated with respiratory disorders mainly represented by edemas, swelling throat, breathing difficulties and hives)			✓

If you have a troublesome symptom or side effect that is not listed here or becomes bad enough to interfere with your daily activities, talk to your healthcare professional.

Reporting Side Effects

You can report any suspected side effects associated with the use of health products to Health Canada by:

- Visiting the Web page on Adverse Reaction Reporting (<https://www.canada.ca/en/health-canada/services/drugs-health-products/medeffect-canada/adverse-reaction-reporting.html>) for information on how to report online, by mail or by fax; or
- Calling toll-free at 1-866-234-2345.

NOTE: Contact your health professional if you need information about how to manage your side effects. The Canada Vigilance Program does not provide medical advice.

Storage:

DIFFERIN or DIFFERIN XP should be stored at room temperature (15° to 30°C). Protect from freezing. Keep out of reach and sight of children.

If you want more information about DIFFERIN or DIFFERIN XP:

- Talk to your healthcare professional
- Find the full product monograph that is prepared for healthcare professionals and includes this Patient Medication Information by visiting the Health Canada website: <https://www.canada.ca/en/health-canada/services/drugs-health-products/drug-products/drug-product-database.html>; Galderma Canada Inc. website <https://www.galderma.com/canada>, or by calling 1-800-467-2081.

This leaflet was prepared by Galderma Canada Inc.

Last revised: September 28, 2021